

circuit diagram

KBL 7900

KBL Convertible

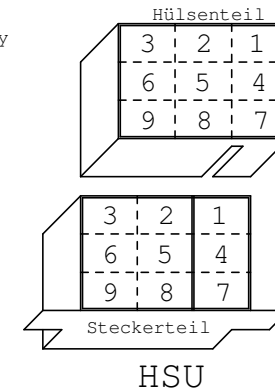
			Datum	25.09.06	KBL- Solarien		MS 7900 IND_USA	MS 7900_IND_220V_usa	= Änderungen vorbehalten	
			Bearb.	R.Schmidt						+
			Gepr.							Blatt 1
Zust.	Änderung	Datum	Name	Norm	Urspr.	Ers.f.	Ers.d.	MS7900_IND_05/0906us	von 11Bl.	

connectors

X0 control unit/ main terminal block
 X1 control unit/ ballast, tubes
 X2 control unit/ ballast, tubes/ shoulder tanner
 X3 control unit/ ballast, facial tanner
 X4 control unit/ ballast, facial tanner
 X5 control unit/ exhaust fan
 X6 control unit/external timer, decorative light
 X6A control unit/deco light canopy, -back side
 X7 control unit/ airconditioner
 X8 exhaust fan
 X9 air ventilation
 X10 air ventilation body
 X11 airconditioner
 X12 condensate pump
 X13 heat return, servo motor
 X13A heat return, thermostat
 X15 external timer
 X14 decorative light insert front
 X14A tube insert front
 X18A compressor unit

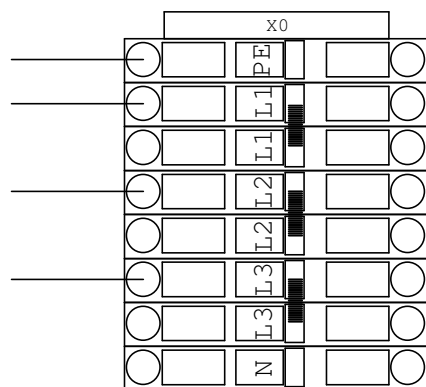
XD1 connector canopy, tubes
 XD2 connector canopy, tubes
 XD3 connector canopy, tubes
 XD4 connector canopy, tubes/decorative light
 XD5 connector canopy, tubes distribution
 XD6 connector canopy,tubes deco inside
 XD7 connector canopy,facial tanner/thermal switch
 XS1 connector back side, tubes
 XS2 connector back side, tubes distribution
 XS3 connector back side, tube dekorative light
 XL1 connector base, tubes
 XL2 connector base, tubes
 XL3 connector base, tubes
 XL4 connector base, tubes distribution
 X31 aqua cool, aroma
 X32 shoulder tanner
 X33 pure air

E1 main control board/ start,power supply
 E2 main control board/ body fan
 E3 main control board/ relais output
 E4 main control board/ remote start
 E5 main control board/ error messages
 E6 n.c.
 E9 music amplifier/ power supply
 E10 relais board fresh/ power supply
 E11 relais board fresh/ relais output
 E12 relais board fresh/ relais output
 E15 LED transformer, power supply
 E16 LED transformer output
 E17 LED power supply
 E19 speed control, exhaust air fan
 E20 Interface/Audio Switch ,power supply

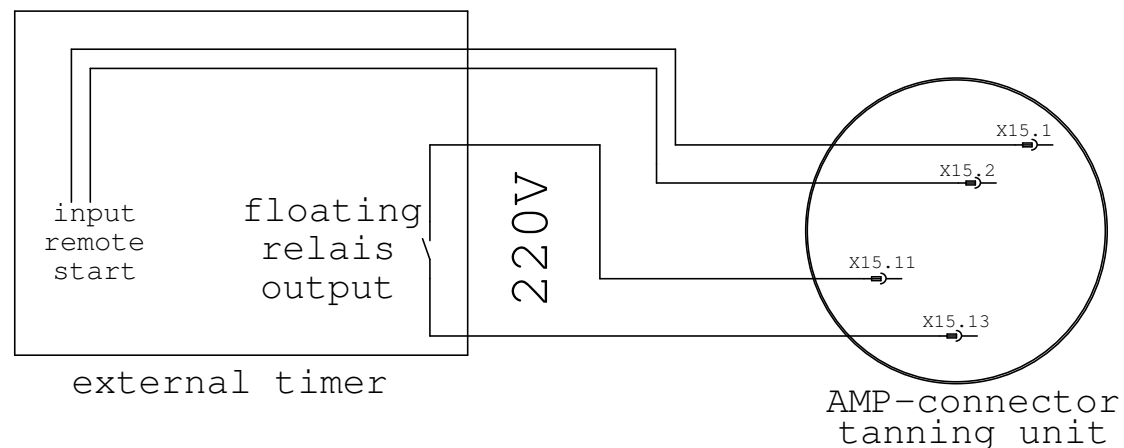


connection of the main power supply
 3 x 220V / 60Hz ~ 4 x AWG 6

ground
 L1 (R)
 L2 (S)
 L3 (T)



connection to external timer
 with an floating relais output



Datum 25.09.06

Bearb. R.Schmidt

Gepr.

KBL- Solarien



MS 7900 IND_USA

MS 7900_IND_220V_usa

= Änderungen vorbehalten

+

Zust. Änderung Datum Name Norm

Urspr.

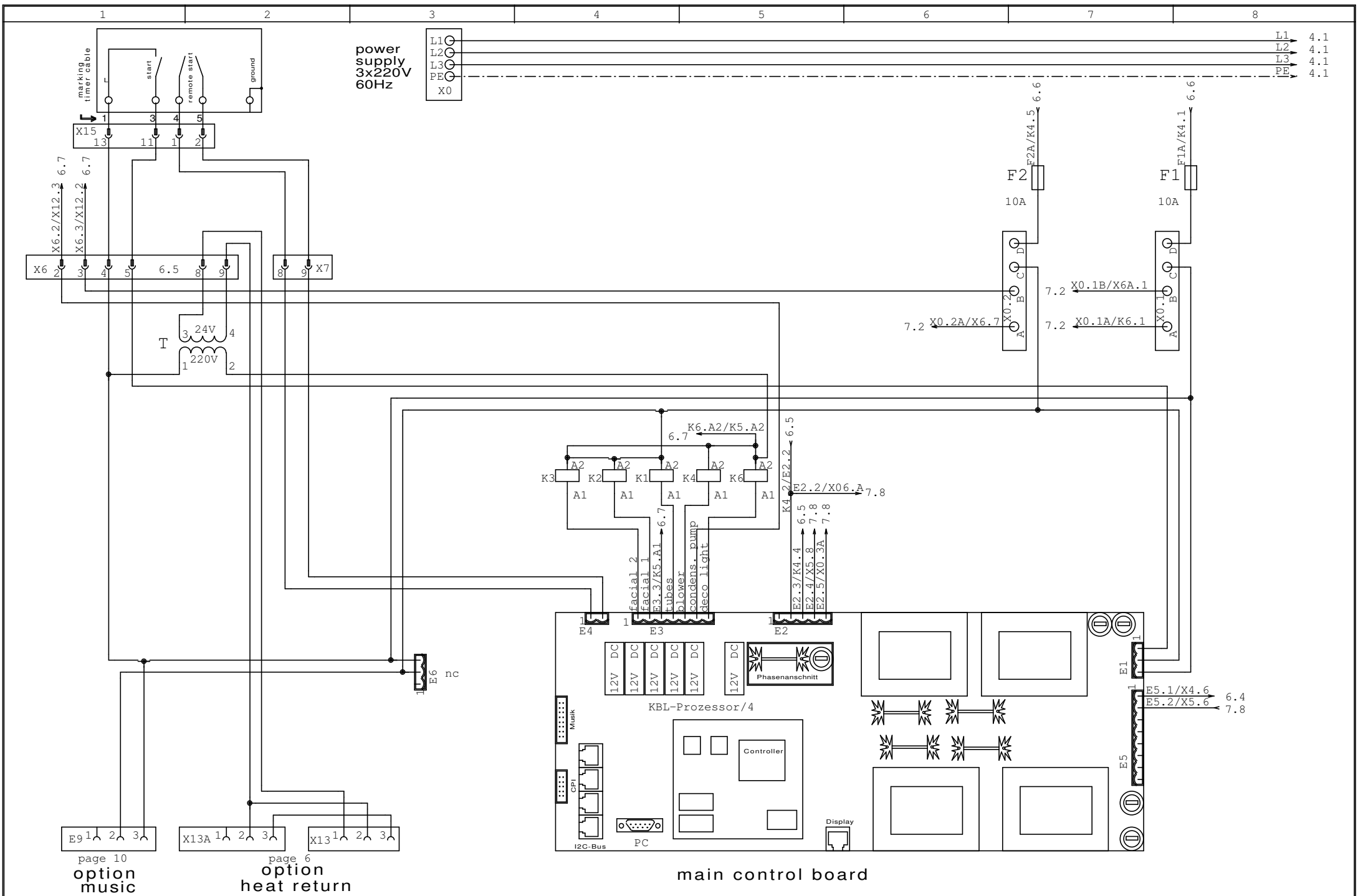
Ers.f.

Ers.d.

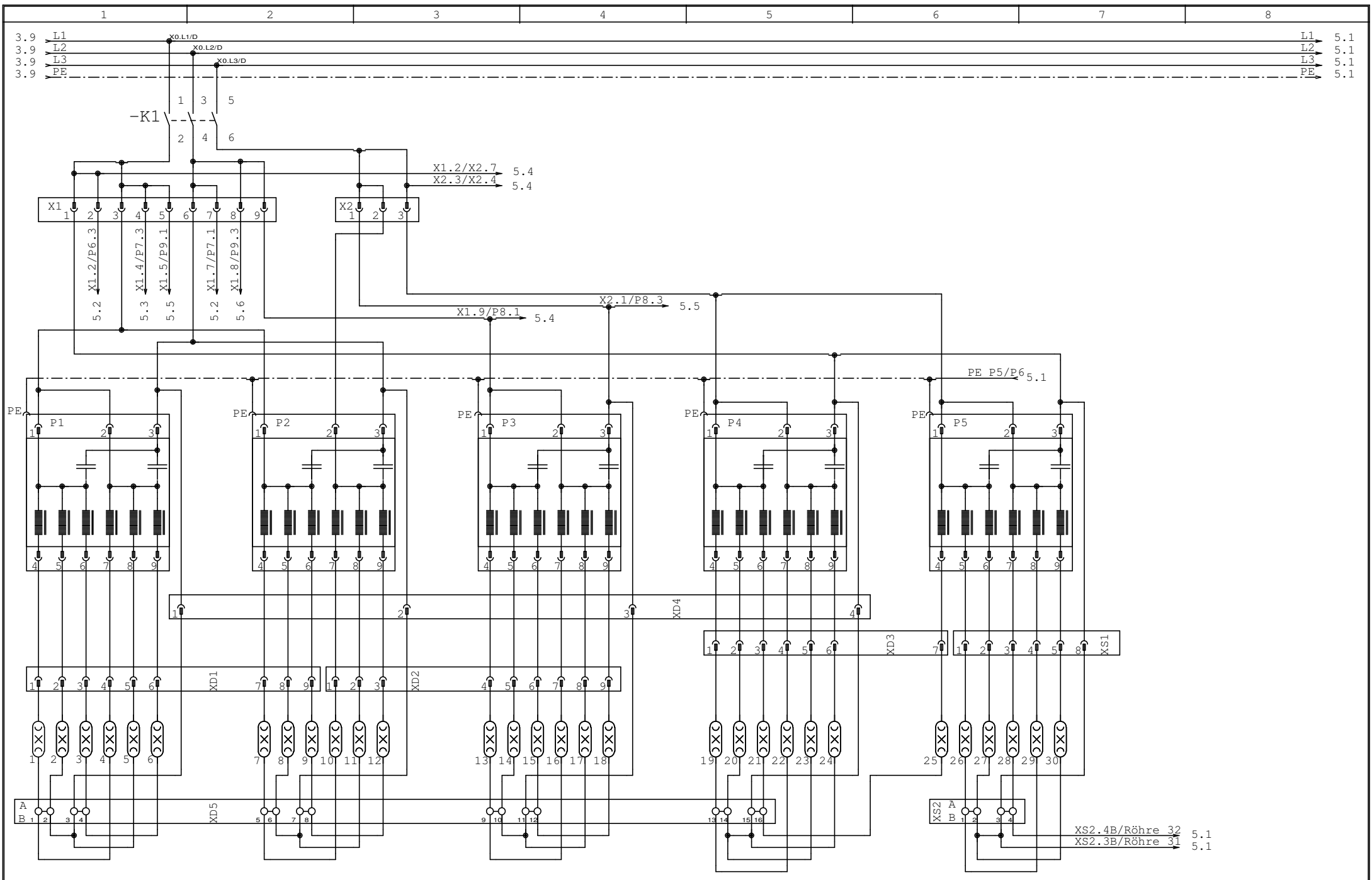
MS7900_IND_05/0906us

Blatt 2

von 11Bl.



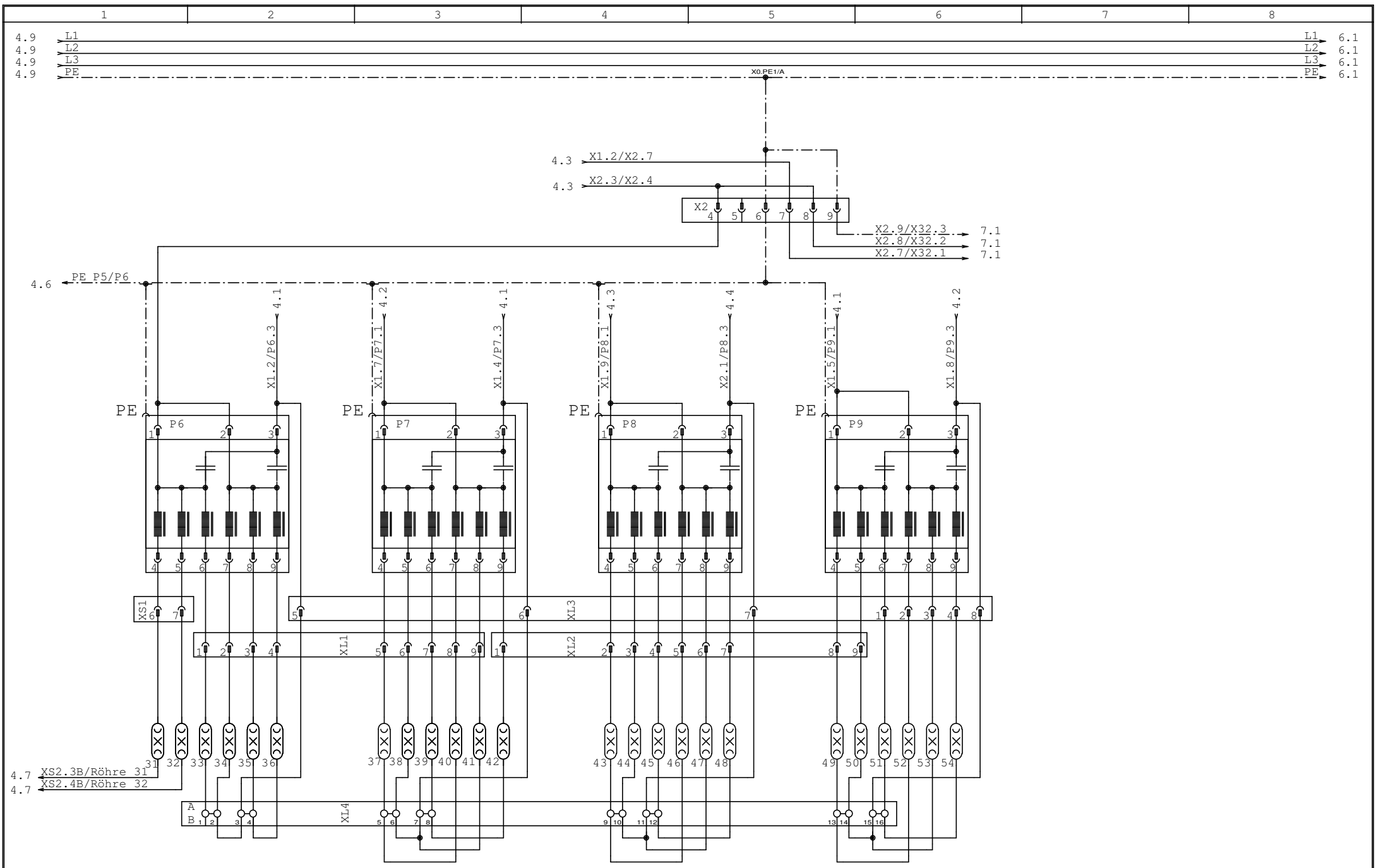
				Datum	25.09.06		MS 7900 IND_USA		= Änderungen vorbehalten
				Bearb.	R.Schmidt		MS 7900 IND_USA		+ Blatt 3
				Gepr.			MS7900_IND_05/0906us		von 11 Bl.
Zust.	Änderung	Datum	Name	Norm	Urspr.	Ers.f.	Ers.d.		



Röhren Decke 1 - 25

Röhren Seite 26 - 30

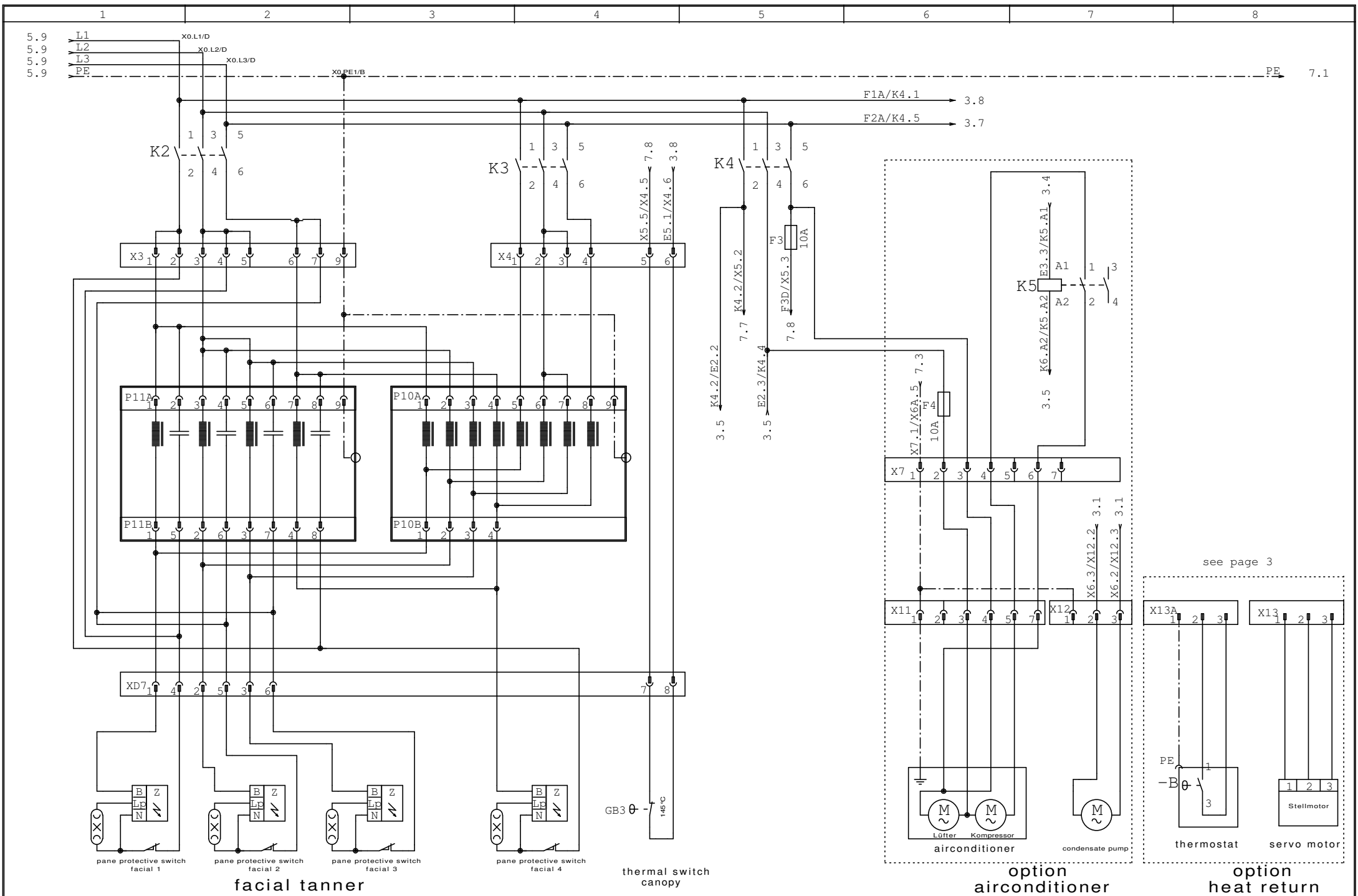
				Datum	25.09.06	 KBI <small>KONIGSBERG COMPANY</small>		MS 7900 IND_USA		= Änderungen vorbehalten	
				Bearb.	R.Schmidt			MS 7900_IND_220V_usa MS7900_IND_05/0906us		+ Blatt 4	
				Gepr.						von 11Bl.	
Zust.	Änderung	Datum	Name	Norm	Urspr.	Ers.f.	Ers.d.				



Röhren Seite 31/32

Röhren Liege 33 - 54

				Datum	25.09.06	 KBI <small>SOLAR SYSTEMS COMPANY</small>	MS 7900 IND_USA		= Änderungen vorbehalten
				Bearb.	R.Schmidt		MS 7900_IND_220V_usa		+
				Gepr.			MS7900_IND_05/0906us		Blatt 5
Zust.	Änderung	Datum	Name	Norm	Urspr.	Ers.f.	Ers.d.	von 11Bl.	



Datum	25.09.06
Bearb.	R.Schmidt
Gepr.	
Zust.	Änderung
Datum	
Name	
Norm	

KBL- Solarien

KBI
SOLAR SYSTEMS COMPANY

MS 7900 IND_USA

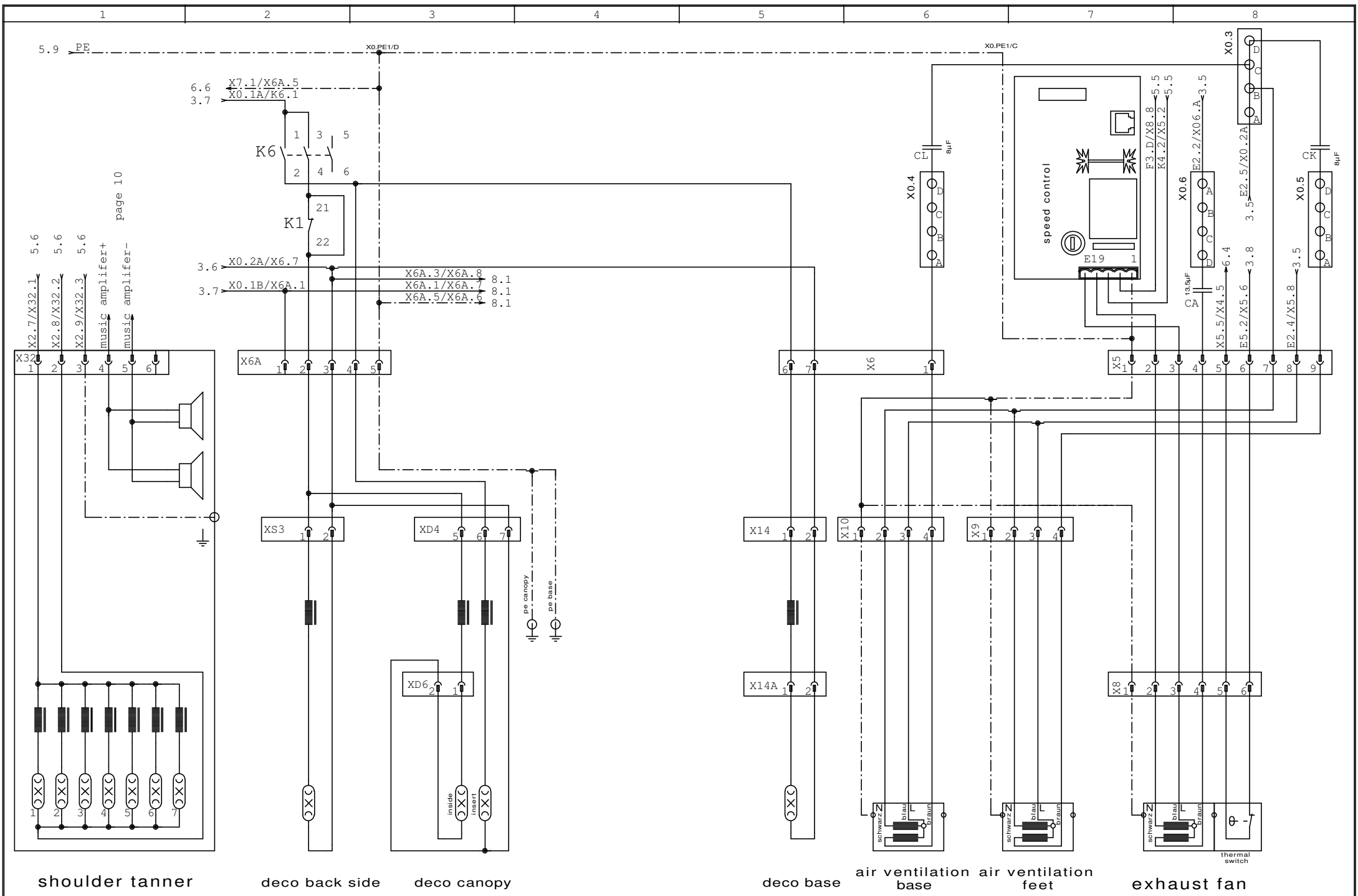
Urspr.	Ers.f.	Ers.d.
--------	--------	--------

MS 7900_IND_220V_usa

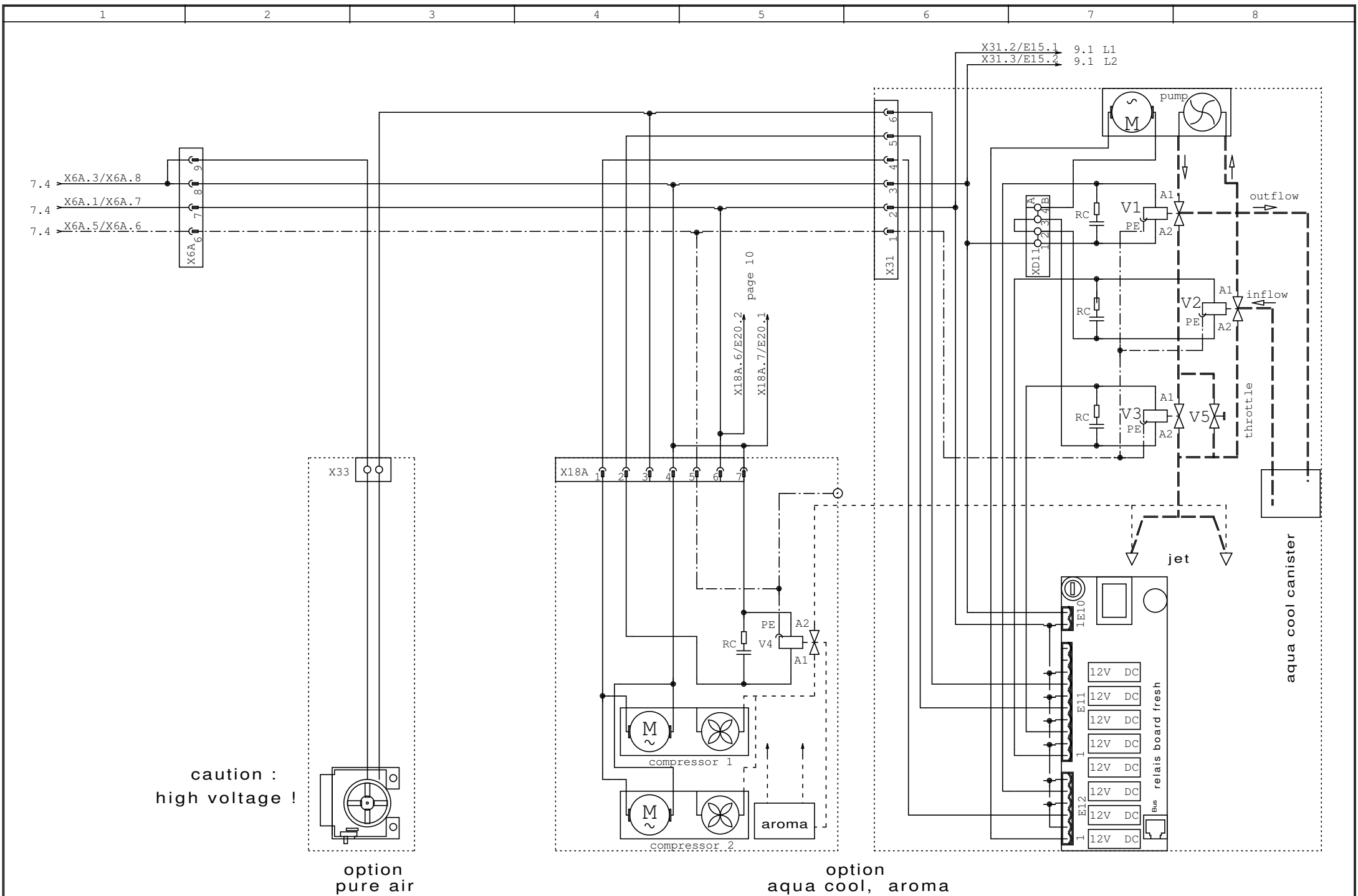
MS7900_IND_05/0906us

Blatt 6
von 11Bl.

= Änderungen vorbehalten
+

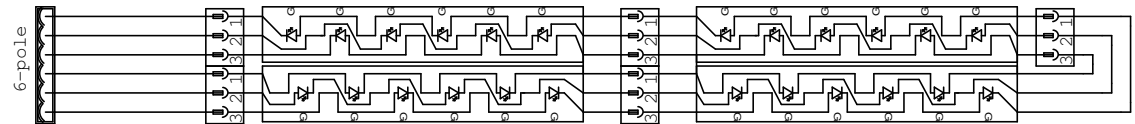
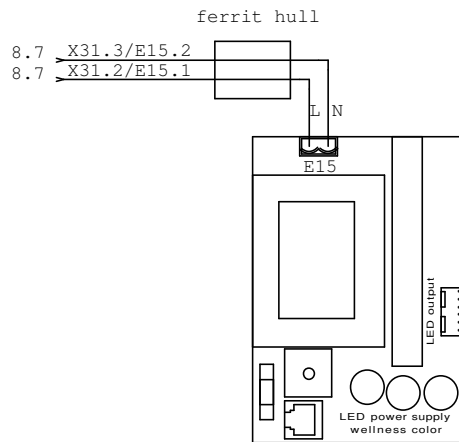


				Datum	25.09.06	KBL- Solarien			MS 7900 IND_USA		MS 7900_IND_220V_usa		= Änderungen vorbehalten			
				Bearb.	R.Schmidt											
				Gepr.												
Zust.	Änderung	Datum	Name	Norm		Urspr.	Ers.f.	Ers.d.			MS7900_IND_05/0906us		Blatt 7			
												von 11Bl.				

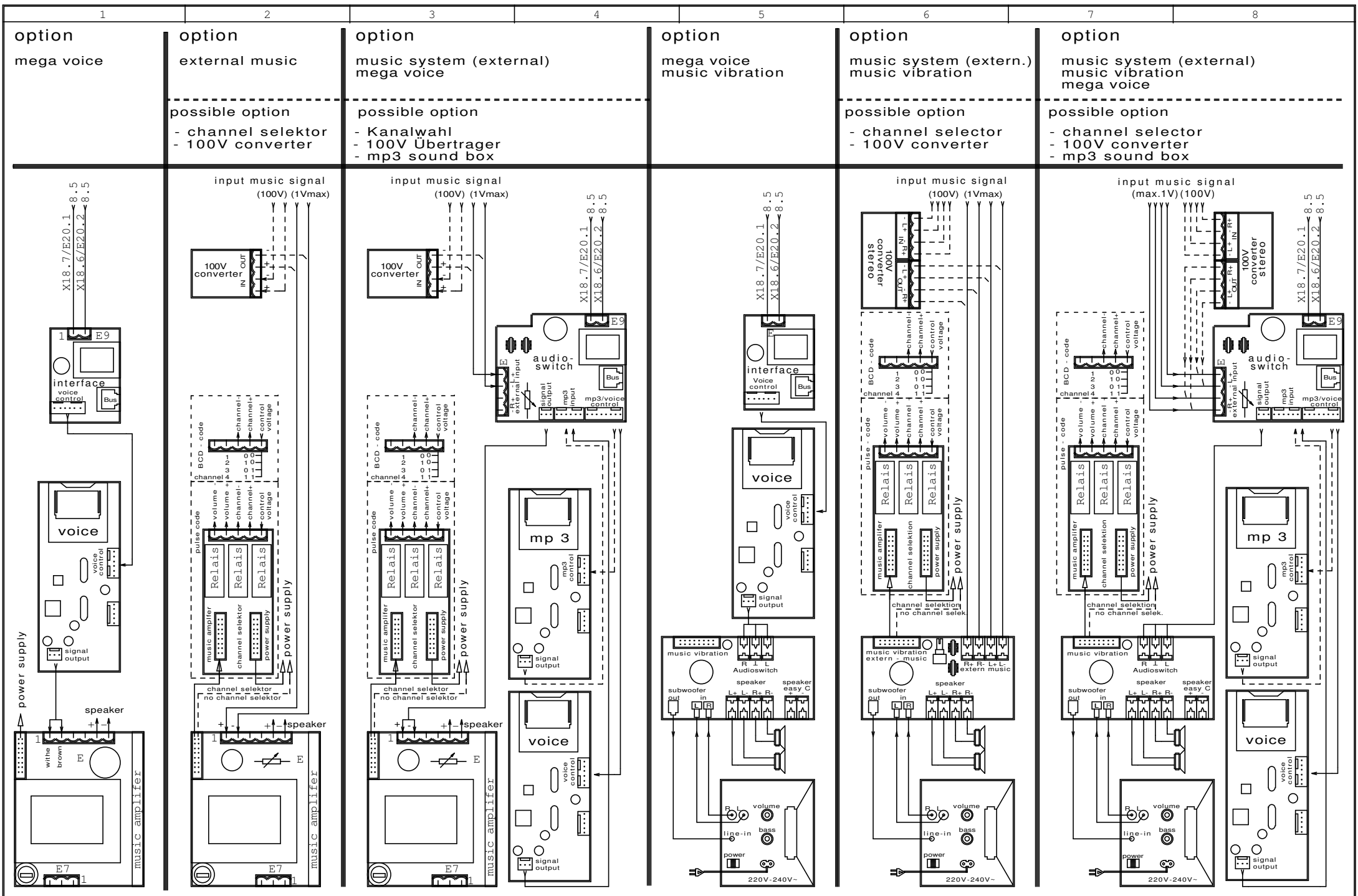


				Datum	25.09.06	KBL- Solarien			MS 7900 IND_USA		MS 7900_IND_220V_usa		= Änderungen vorbehalten	
				Bearb.	R.Schmidt				MS 7900 IND_USA		MS7900_IND_05/0906us		Blatt 8	
				Gepr.					MS 7900 IND_USA		MS7900_IND_05/0906us		von 11 Bl.	
Zust.	Änderung	Datum	Name	Norm	Urspr.	Ers.f.	Ers.d.							

option wellness color



				Datum	25.09.06	KBL- Solarien		MS 7900 IND_USA	MS 7900_IND_220V_usa		= Änderungen vorbehalten	
			Bearb.	R.Schmidt							+ Blatt 9	
			Gepr.								von 11 Bl.	
Zust.	Änderung	Datum	Name	Norm		Urspr.	Ers.f.	Ers.d.	MS7900_IND_05/0906us			



Datum	25.09.06
Bearb.	R.Schmidt
Gepr.	
Zust.	Änderung
Datum	
Name	
Norm	

Urspr.	Ers.f.	Ers.d.
--------	--------	--------



MS 7900 IND_USA

MS 7900_IND_220V_usa	= Änderungen vorbehalten
MS7900_IND_05/0906us	+ Blatt 10 von 11Bl.

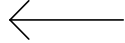
top
(view of above)

base
(view of above)

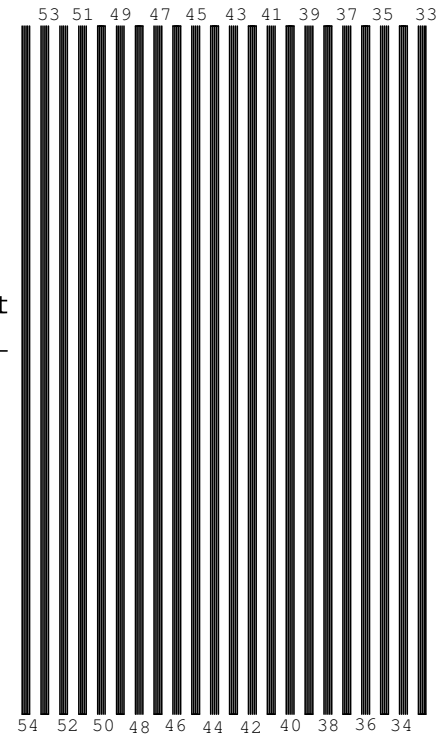
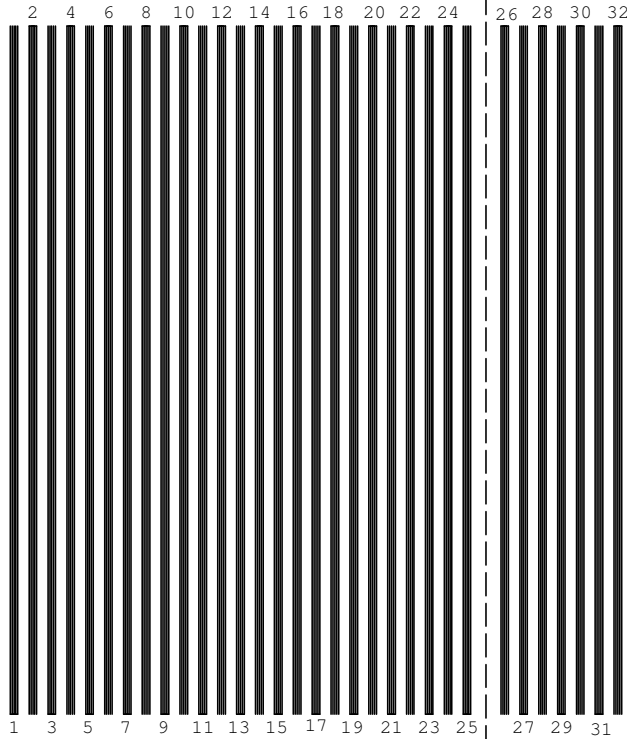
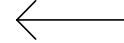
canopy

back side

front



front



			Datum	25.09.06	KBL- Solarien		MS 7900 IND_USA	MS 7900_IND_220V_usa		= Änderungen vorbehalten	
			Bearb.	R.Schmidt						+	
			Gepr.								
Zust.	Änderung	Datum	Name	Norm	Urspr.	Ers.f.	Ers.d.	MS7900_IND_05/0906us		Blatt 11 von 11Bl.	